



01

- 01 MARIE MÉRO
- 02 OUI
- 03 PAUSE CAFÉ
- 04 NOLI
- 05 JAMES LAKELAND



03



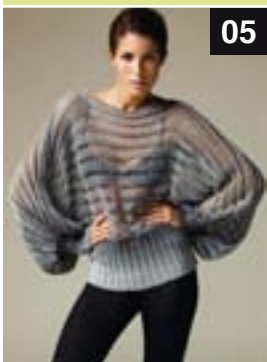
02



04

# Down to earth

Although bright colours are highlights of the season, leading designers have also selected earthy tones of browns and greens, suggesting a lean towards natural colourways. Combine an easy to wear shift dress with a chunky crochet knit to complete the look.



05

Necklines include the flattering cowl and the halter neck sees a resurgence. This is particularly apparent on fifties inspired day dresses. Sleeves however are barely there, with many designs featuring cap sleeves, if any. However, knitwear makes a statement with a twist from the eighties batwing

With so many different styles being transferred to the catwalk, you may have difficulty choosing a look!