

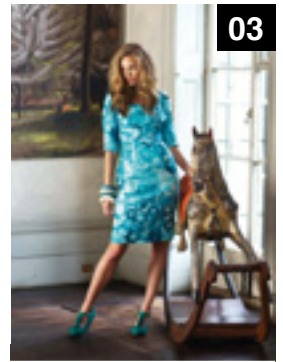


01



02

01 JOHN CHARLES
02 DORIS STREICH
03 PADDY CAMPBELL
04 OUI
05 OUI



03



04



05

Summer in the city

Light up the city this season with colourful fabrics in shades of citrus and hues of blue. Bright fabrics flatter any skin tone and look fabulous teamed with coordinating accessories. Lengths range from elegantly long to above the knee. Button through dresses are a popular addition to the season's must haves, combining a classic look with ease of wear.

For chillier evenings why not wear a crochet cardigan? This new twist on an old design provides warmth and style and is perfect with loose fit trousers or skirts. Earth tones contrast brilliantly with the brighter shades on the catwalk and can be taken through to the next season.