



01



02

The long and the short of it

Designers are going to any lengths this season, with the emphasis on empire lines and bias cuts. Both are perfect for the summer months and teamed with a stylish hat will keep you in the shade.

Trousers have been designed in pastel colours with matching tops, perfect for a lazy stroll along the beachfront or trip to the shops. Patterns range from geometric to larger floral prints, to random splashes of colour.

Khaki also sees a comeback, offering a more exotic look. The earthy shades complement all skin tones and can be dressed up or left casual, depending on the occasion. Step out in style this summer!

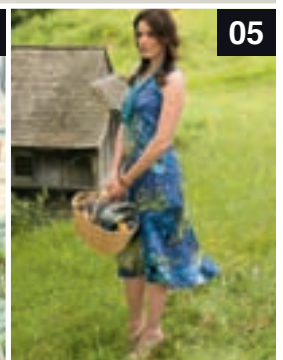


03

- 01 ENJOY ALL BEAUTIFUL
- 02 STEILMANN
- 03 MICHELE SUMMER
- 04 POMODORO
- 05 DORIS STREICH



04



05